

Collin Navigation Solutions®



ENT SURGICAL NAVIGATION SYSTEM

The golden standard

In **ENT** Surgical Navigation

Since 2002, Collin has been manufacturing and marketing ENT surgical navigation systems using electromagnetic technology.

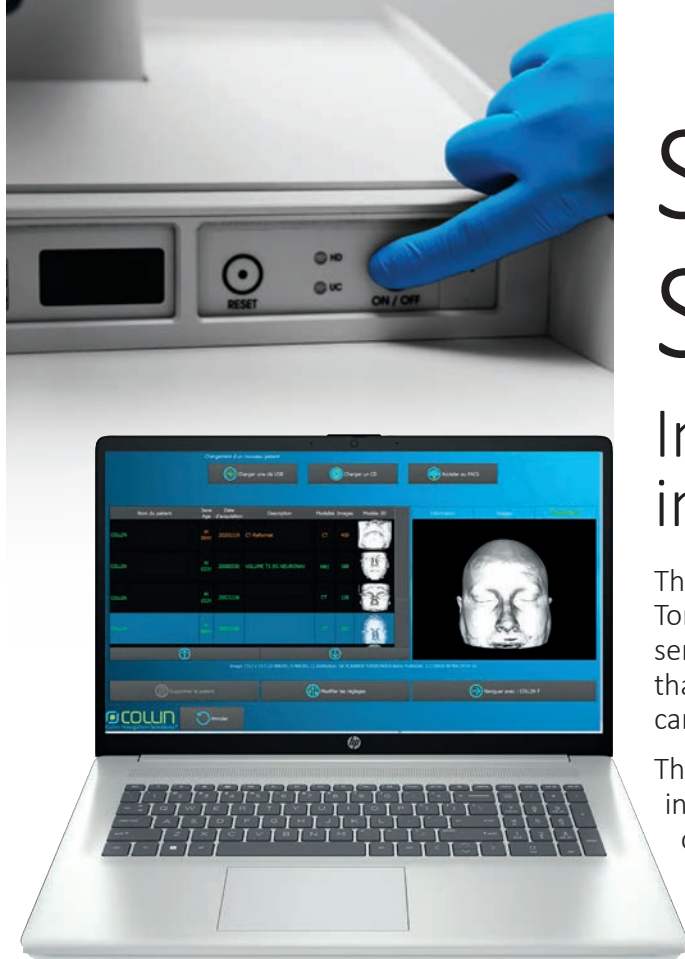
The experience we have gained over these years makes us the reference in the field electromagnetic navigation.

Collin is now the market leader in Europe and many other countries.

A focused ENT Surgical Navigation System
For all **ENT** needs

- Endonasal surgery
- Skull base surgery
- Otoneurosurgery
- New born and pediatric surgeries





Smart, Simple & Fast

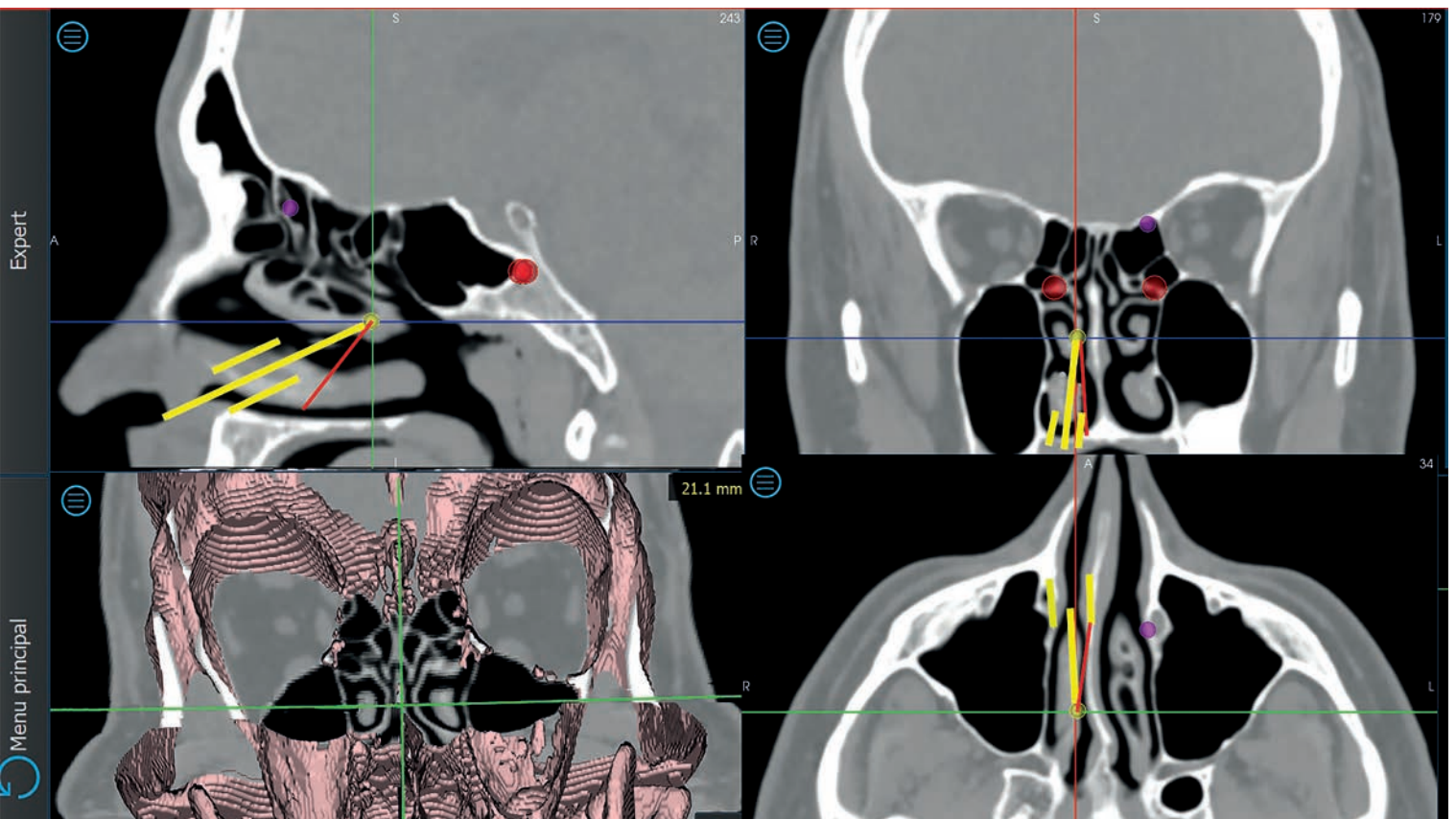
Intuitive loading of patient images

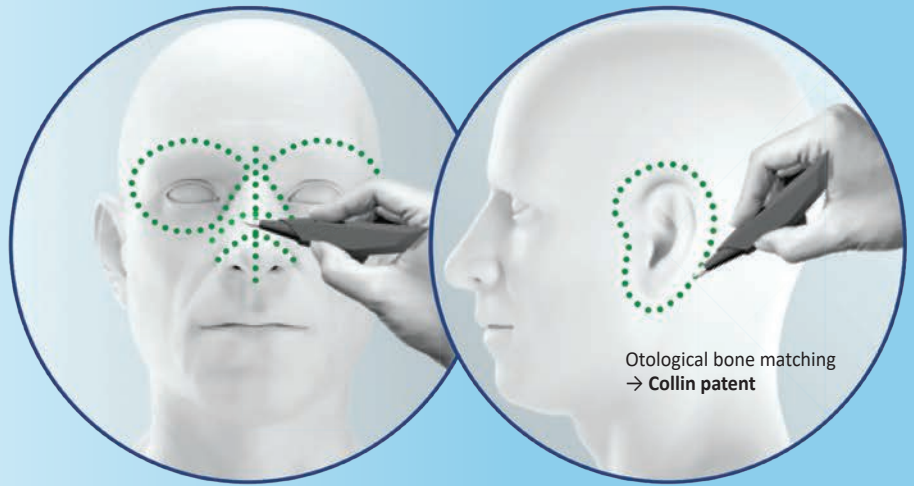
The images (CT, Cone Beam Scans, MRI, Positron Emission Tomography) are presented directly in 3D representation of the series proposed for loading. In one glance the surgeon validates that the selected series corresponds to his expectations. The images can be loaded from CD, DVD, USB or Pacs.

The same software allowing test of images and remote planning, installable on all remote computer is included. You have certainty of compatibility of images of your patient without going to the operating room. It is possible to validate/confirm images already in the patient's possession, without having to re-irradiate.

Surgery planning

The CNS advanced software allows for preoperative surgical preplanning to enhance intraoperative navigation workflow: Points to be reached, Points to avoid, guidance from one point to another.





Simple, accurate and fast surface registration

A proven method for perfect precision by automatically matching the patient's anatomy to the 3D model rendered from the scans.

All the ENT approaches are possible

Patient referencing allows a high-level of navigational precision throughout the surgery without immobilizing the patient's head. The patient referencing ancillaries used by **Collin Navigation Solutions® 4040** are non-invasive, atraumatic and can be easily sterilized. They offer the additional advantage of remarkable stability and perfect integration into the operating theatre environment.

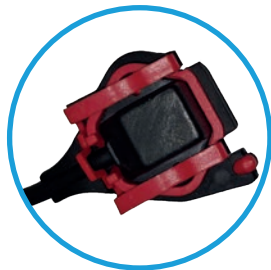
	Headset (Frontal Reference)	Frontal Capsule	Buccostat (Oral Reference)	Quick Fix (Bone Reference)	Octopus (Pediatric Reference)
Endonasal surgery (FESS)	■	■	■	■	■
Mixed endonasal surgery	■	■	■	■	■
Transfacial approach	■	■	■	■	■
Bicorona Unterberger approach	■	■	■	■	■
Transzygomatic approach	■	■	■	■	■
Lateral skull-base surgery	■	■	■	■	■
Oto-neurosurgery	■	■	■	■	■

■ Optimal / ■ Possible / ■ Not Possible

100% ENT

Reusable instruments and Instrument Integration

→ Only two small sensors are used



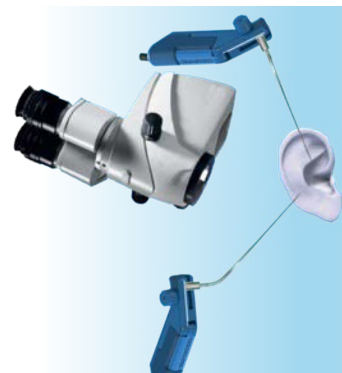
Sinus suction tubes

A standard double set of sterilizable suction tubes is provided to allow for two consecutive surgeries.



3rd party instrument

It is possible to navigate any instruments, such as microsforceps, endoscopes, etc.



Shaver Integration

Set of optional adapters autoclavables, adapted for all models on the market.



The use of Collin Navigation Solutions® 4040 does not require the use of specific consumables.

100% ENT

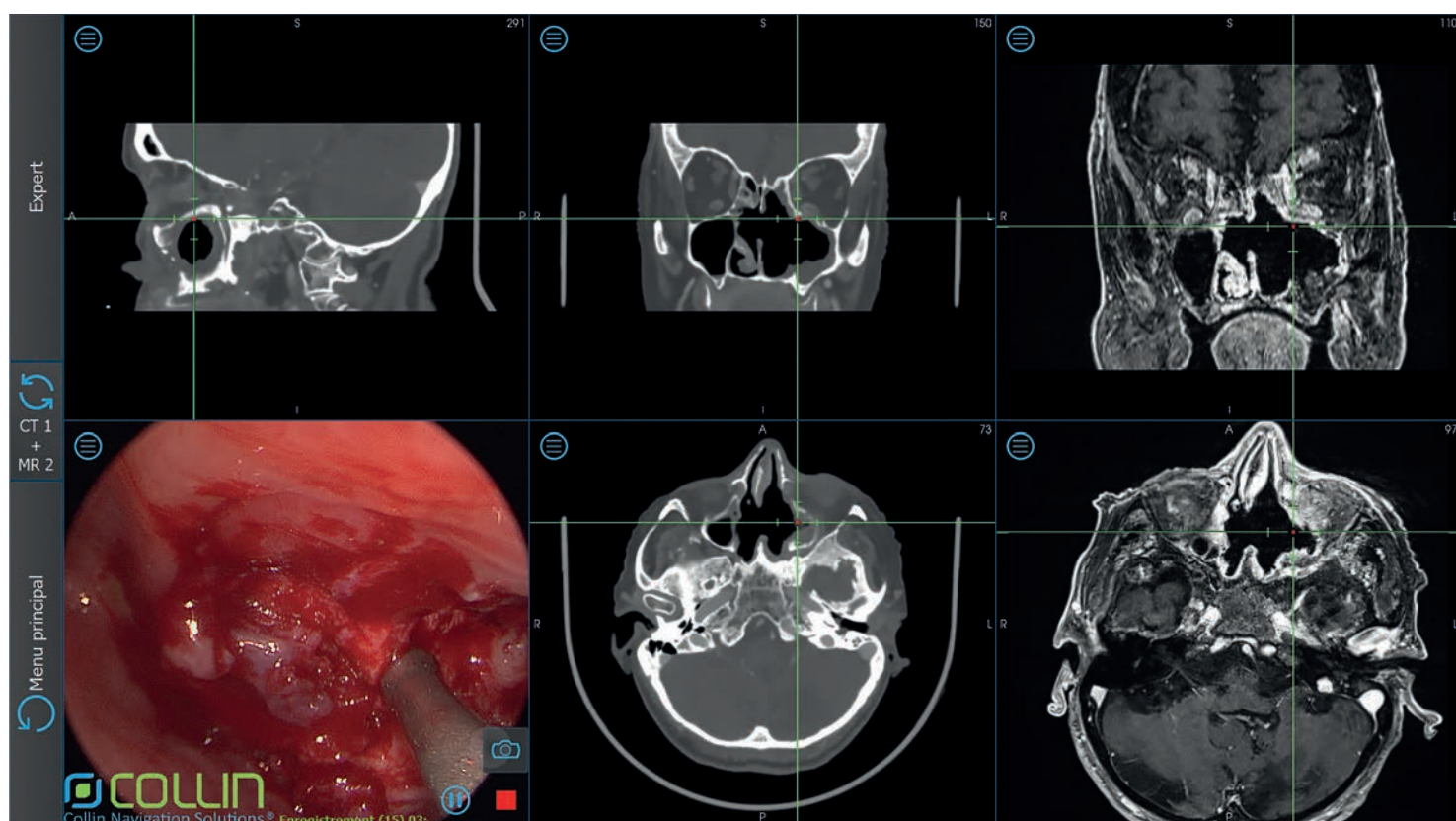
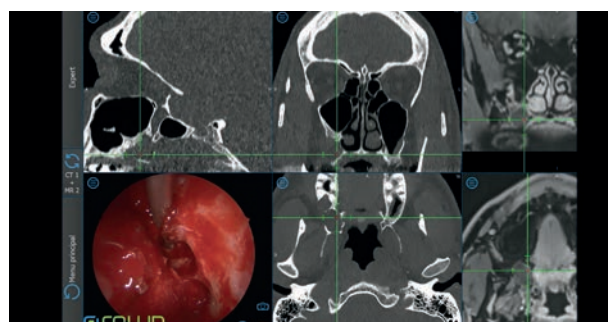
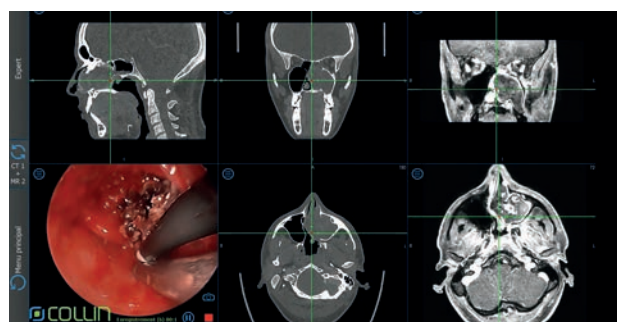


Multimodal navigation

The Solution

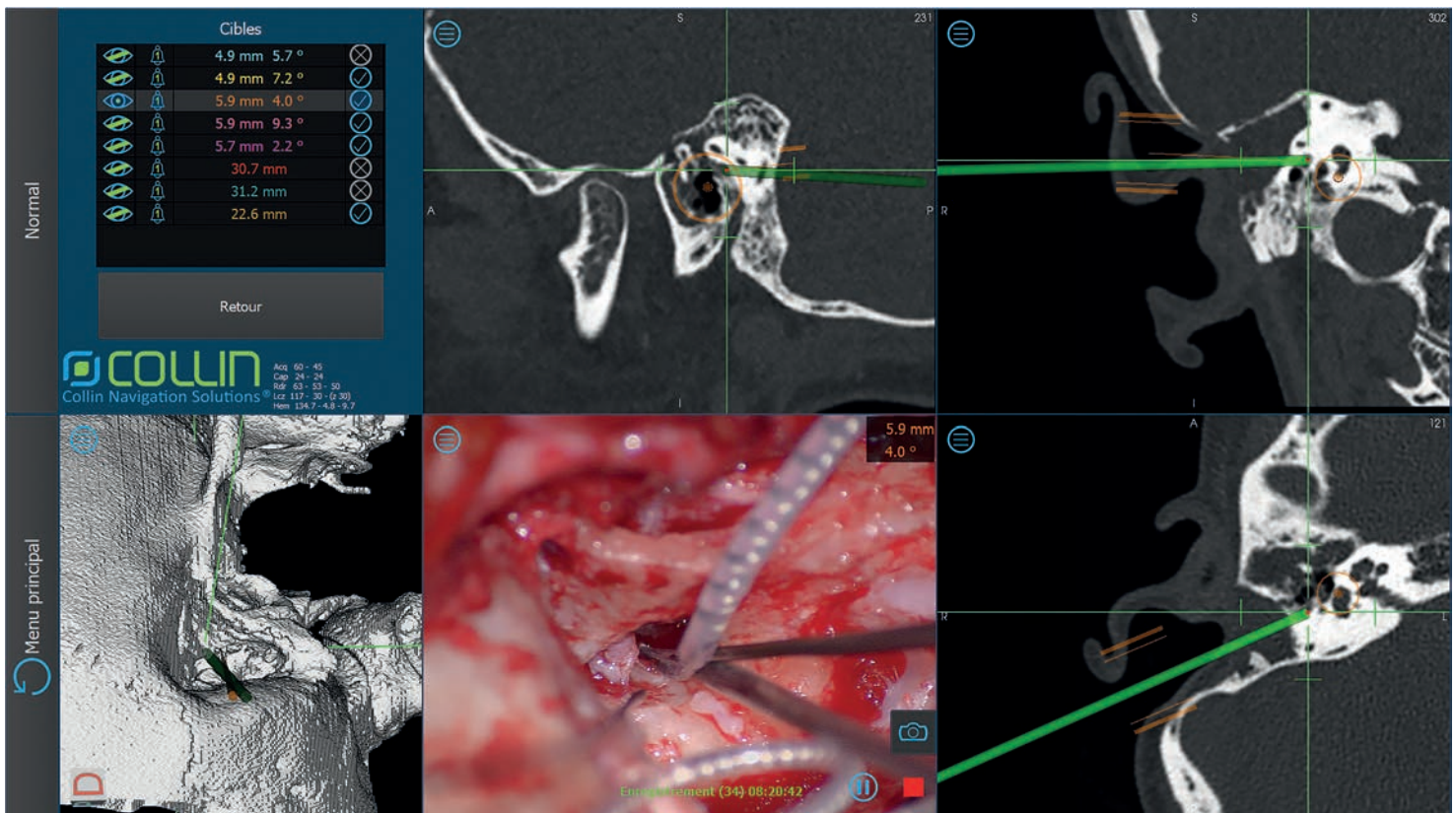
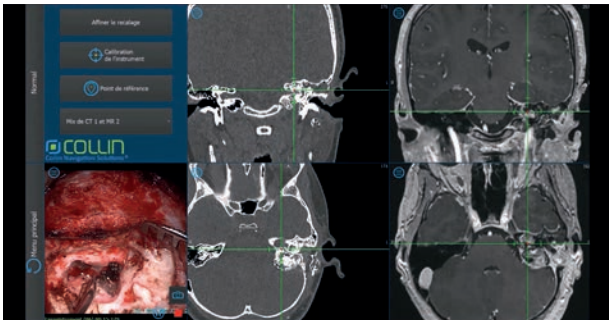
For the skull base Surgery

and tumoral surgeries



Otology

Otoneurosurgery



Collin Navigation Solutions® 4040

→ Software for imaging and planning testion, installabke in any remote computer.
You have the certainty of the compatibility of your image, and your schedules without moving to the operating room.

→ The use of Collin Navigation Solutions® does not require the use of specific consumables

→ Create clinical goal:

Define clinical objectives, or areas to avoid, on your planning software and draw the path to reach or avoid them during your surgery.

→ Multimodale navigation:

Real-time display... of navigation on several series of image at the same time. Scanner, MRI, 3D ...

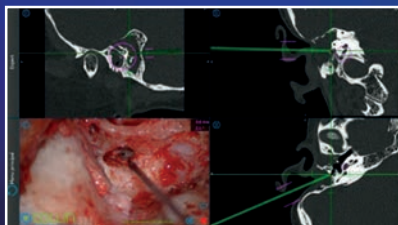
→ All of your instruments (sinus, skull base or otology) can be navigated.



→ Management of your surgical photos and films taken from your browser (navigation image).

→ Otologic navigation

Full compatibility with our remote operated otological surgery robot **RobOtol®** :



Proven unique electromagnetic technology:

→ Juste two sensors in your environment:

- A small electromagnetic transmitter 15 mm x 15 mm x 16 mm that attaches to your patient with one of our accessories.
- An electromagnetic receiver to be attached in your instrument handpiece.

Collin Navigation Solutions® 4040, manufactured by Collin, is a class IIa medical device for surgical navigation in the field of ENT and otoneurosurgery. It has been marked CE by the GMED (CE0459). Only those who have read the instruction and attended training sessins given by Collin or its local distributor are authorized to operat thi equipement.

CE 0459